

# INSTRUCTIONS FOR

## Stainless Steel Tables (#19100)

### Parts List:

Top (1)

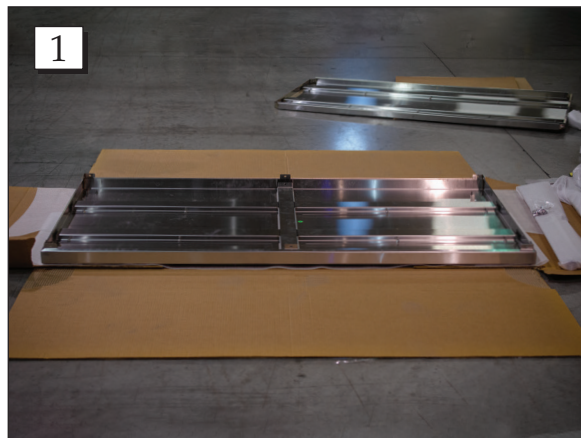
Shelf (1)

Legs (6)

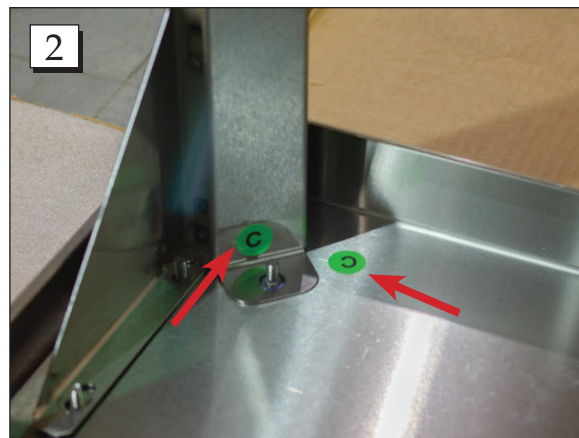
Button-Head Screws (18)

Lock Nuts (12)

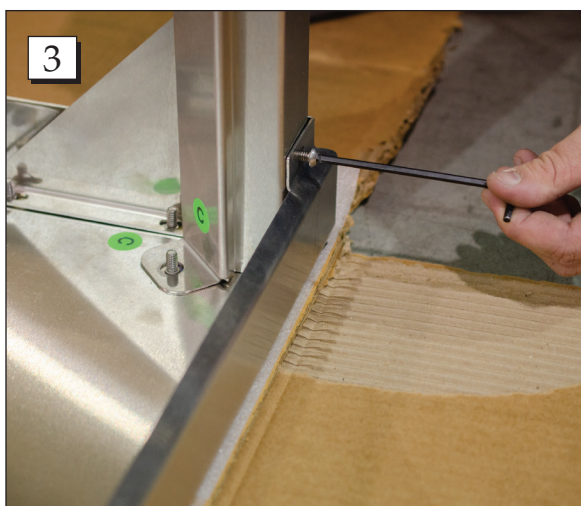
Washers (4)



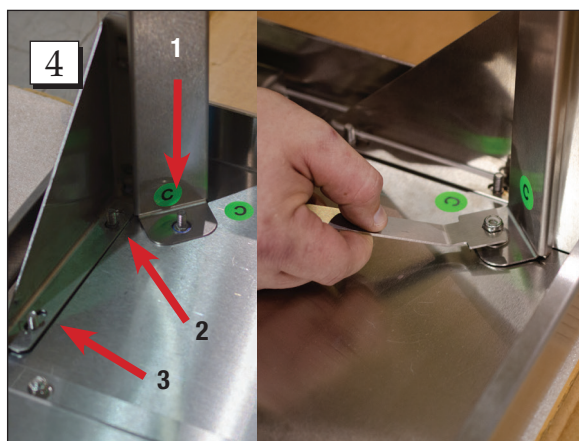
**Step 1.** Start with the top marked "A" lying upside down on the box it was delivered in. Note: We suggest working within the delivery box to prevent scratching the top of the table.



**Step 2.** Starting at the corners marked "C", install the corresponding legs marked "C".

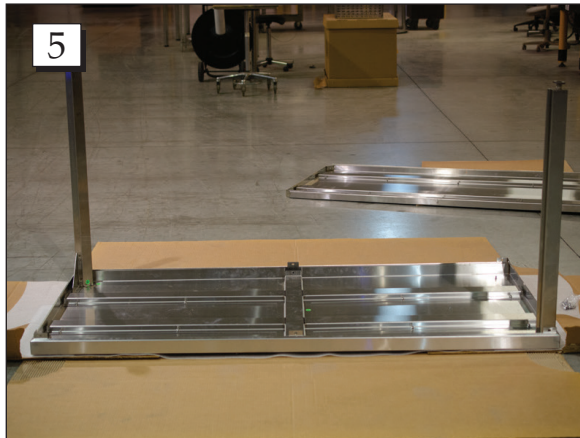


**Step 3.** Place a button head screw on the outside of the leg. Tighten the button head screws with the provided Allen wrench.

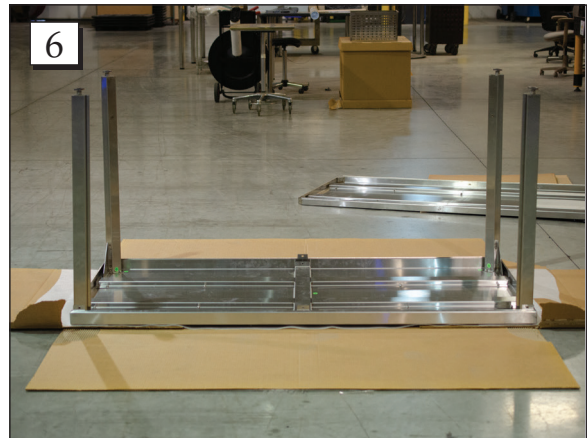


**Step 4.** Place 1 washer and 1 lock nut at the center of the leg (1). Place the remaining 2 lock nuts (2 and 3). Tighten the lock nuts with the provided wrench to secure the leg supports.

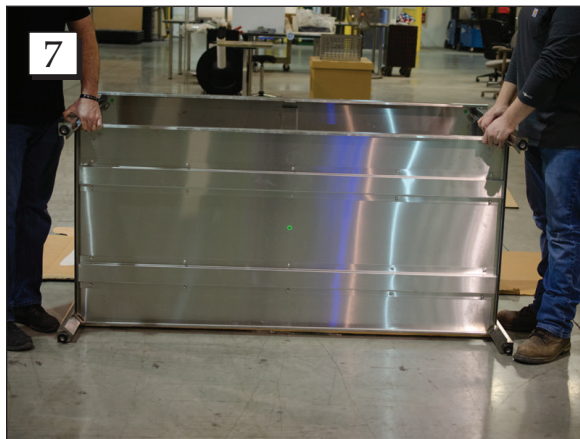
# INSTRUCTIONS FOR Stainless Steel Tables (#19100)



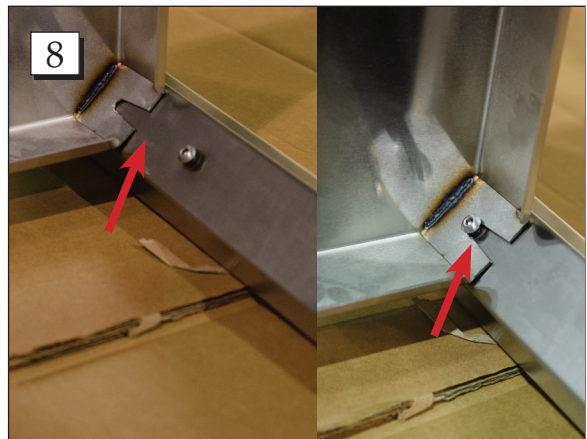
**Step 5.** Table top with "C" legs Installed.



**Step 6.** Repeat steps 2-4 on legs marked "D".



**Step 7.** Turn the table on its side and place the shelf marked "B".



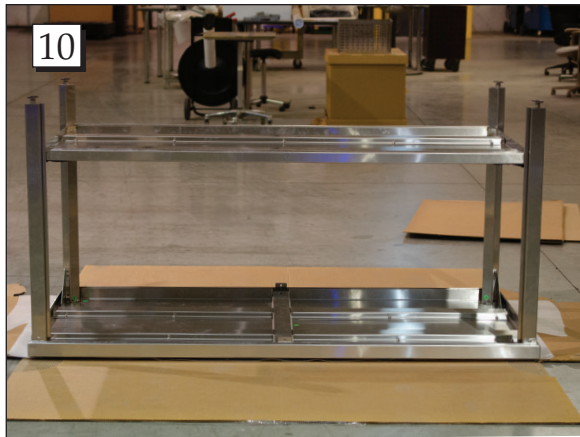
**Step 8.** Slide the shelf into place.



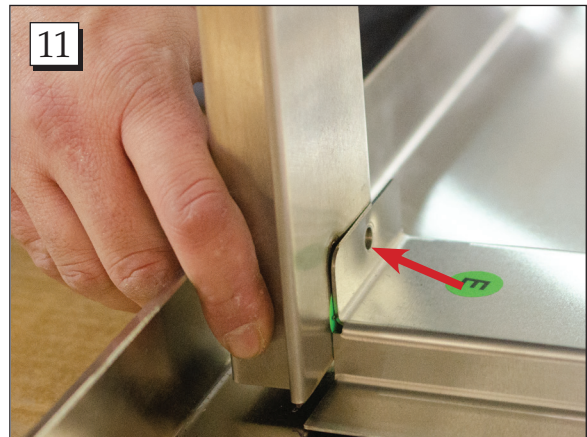
**Step 9.** Tighten the button head screws on each leg with the provided Allen wrench.



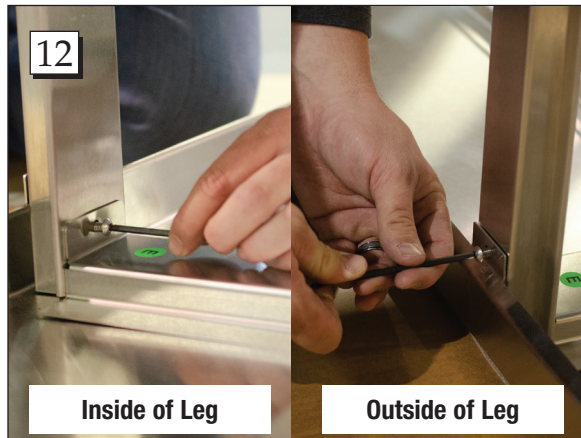
# INSTRUCTIONS FOR Stainless Steel Tables (#19100)



**Step 10.** Flip the table on its top.



**Step 11.** To install the middle legs marked "E", slide the leg into place.



**Step 12.** Secure the middle legs to the top with a button head screw on the inside and outside of each leg.



**Step 13.** Then secure the middle legs to the shelf with one button head screw on the inside of the leg.

